

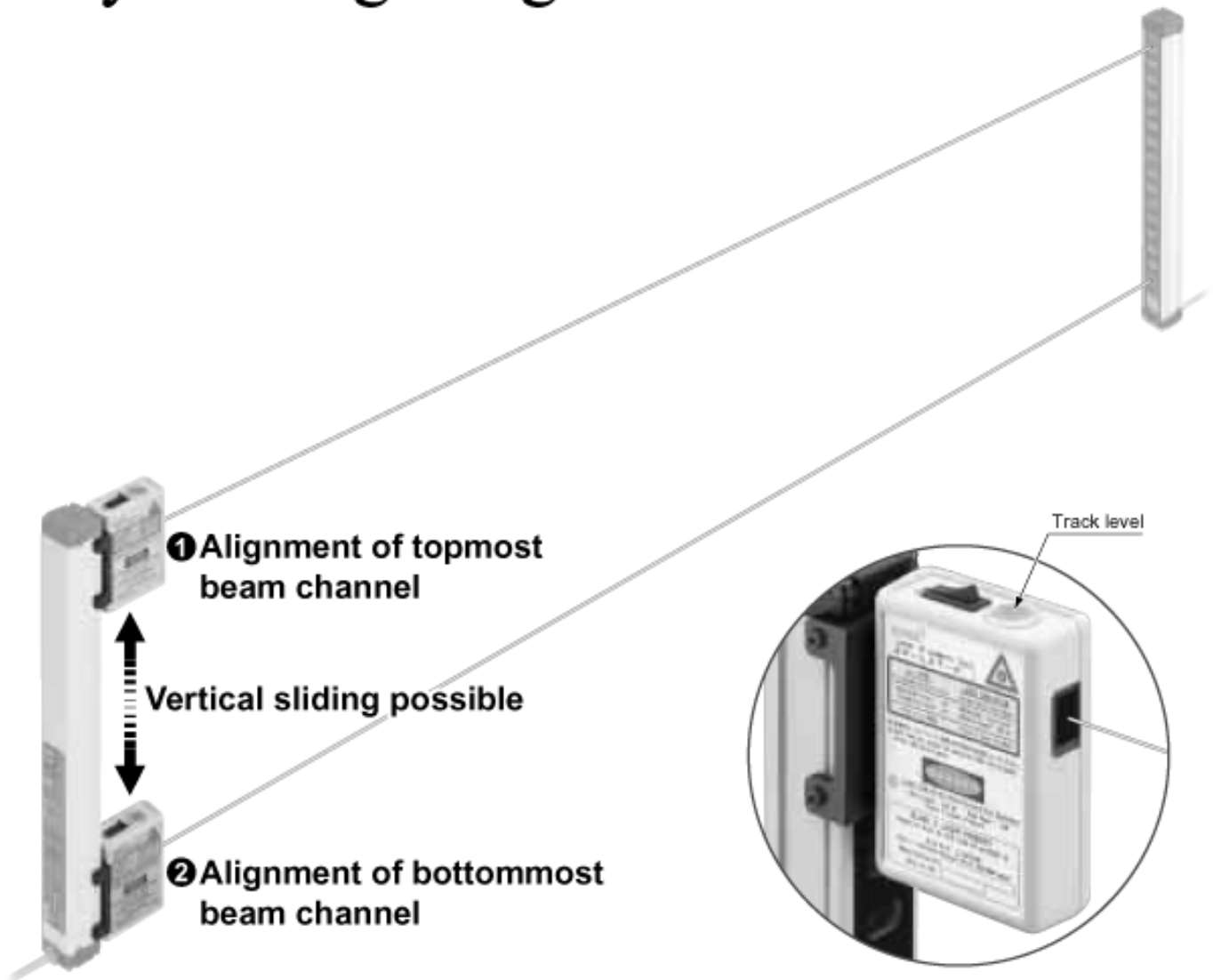


LASER ALIGNMENT TOOL For Light Curtain

New

SF-LAT-2E
SF-LAT-2N

Easy-to-Align Light Curtain Beam Axis



Easy to align the beam axis with laser beam

Using the laser alignment tool SF-LAT-2E/2N makes it easy and quick to align the beam axis with the visible laser beam, even when installing a light curtain for a long distance. In addition, you can adjust it without turning on the power of a light curtain since the adjuster works with a battery.

Quick adjustment with one-touch installation and vertical sliding

With one-touch operation, you can install the laser alignment tool in the grooves on both sides of a light curtain. Vertical sliding is also possible, thus allowing you to quickly align the beam axis of the topmost and bottommost beam channel.

Easy to check if light curtain is horizontal or not

It is conveniently equipped with a track level which allows you to check if the light curtain has been set up horizontally or not.

SPECIFICATIONS

Type	For SF2-EH series	For SF2-N series
Item	Model No.	Model No.
Supply voltage	3V (AA size battery × 2 Nos.)	
Battery	1.5V (AA size battery) × 2 Nos. (replaceable)	
Battery lifetime	10 hours approx. of continuous operation (Manganese battery, at +25°C + 77°F ambient temperature)	
Light source	Red semiconductor laser: class 2 (JIS/IEC/FDA) (Max. output: 1mW Peak emission wavelength: 650nm 0.026mil)	
Spot diameter	10mm 0.394in approx. (at 5m 16.404ft distance)	
Ambient temperature	0 to +40°C + 32 to + 104°F (No dew condensation), Storage: 0 to +55°C + 32 to + 131°F	
Ambient humidity	35 to 85% RH, Storage: 35 to 85% RH	
Material	Enclosure: ABS, Mounting part: Aluminum	
Weight	200g 7.055oz approx. (including batteries)	
Accessories	AA size battery: 2 Nos.	

PRECAUTIONS FOR PROPER USE



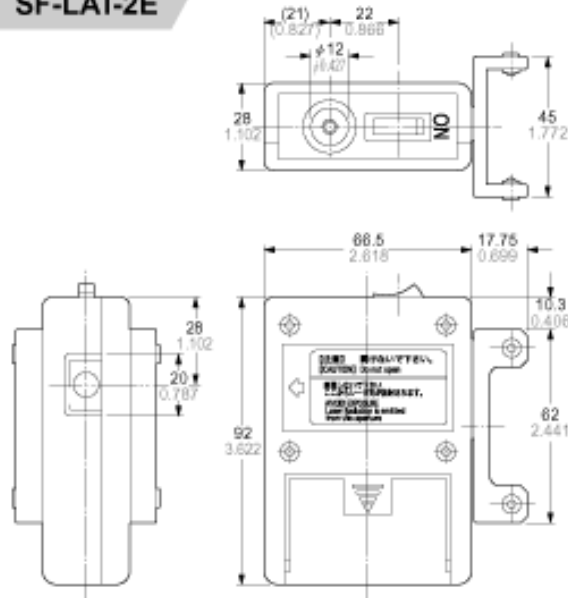
- This product classifies as a Class 2 laser product based on IEC, JIS, and FDA standards. Danger: Never stare into the laser beam as this can damage your vision!
- Never disassemble, repair or modify this product.

Laser radiation

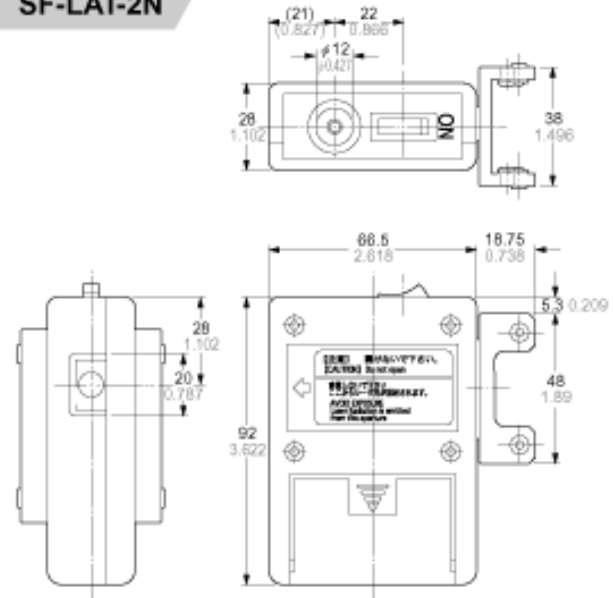
- Do not use this product in any manner other than the purpose or the operation method described in this catalog.
- Make sure not to directly look at the laser beam and beams reflected by other objects, e.g. mirrors.
- Always look at the laser beams from behind the laser alignment tool.
- Wearing protective goggles while operating this product is recommended.
- Make sure that the laser beam strikes a diffuse reflective or absorbent material.

DIMENSIONS (Unit: mm in)

SF-LAT-2E



SF-LAT-2N



All information is subject to change without prior notice.



Ramco Innovations
1207 Maple Street
West Des Moines, IA 50265 USA
Phone: 800-280-6933, 515-225-6933
Fax: 515-225-0063
www.ramcoinnovations.com