

The Polaris platform from Solarius is an integrated, dimensional measurement solution. The system uses a combination of vision and laser technology to perform surface measurements.

The Polaris software uses the latest digital image processing technology to capture and analyze video images for dimensional measurement. It then compares the measurement to nominal values and tolerances to identify conditions of non-conformance. The Polaris tolerance functions conform to ASME Y14.5M 1994.

The Polaris is designed for image documentation, product inspection and quality control. The system uses high precision feedback mechanisms and motion control technology to insure accuracy in stage positioning. The software is easy to use and will deliver reliable and repeatable precision measurement results.

- Full vision inspection capability
- Multi-sensor solution
- AutoFocus reduces setup time
- Digital camera improves performance

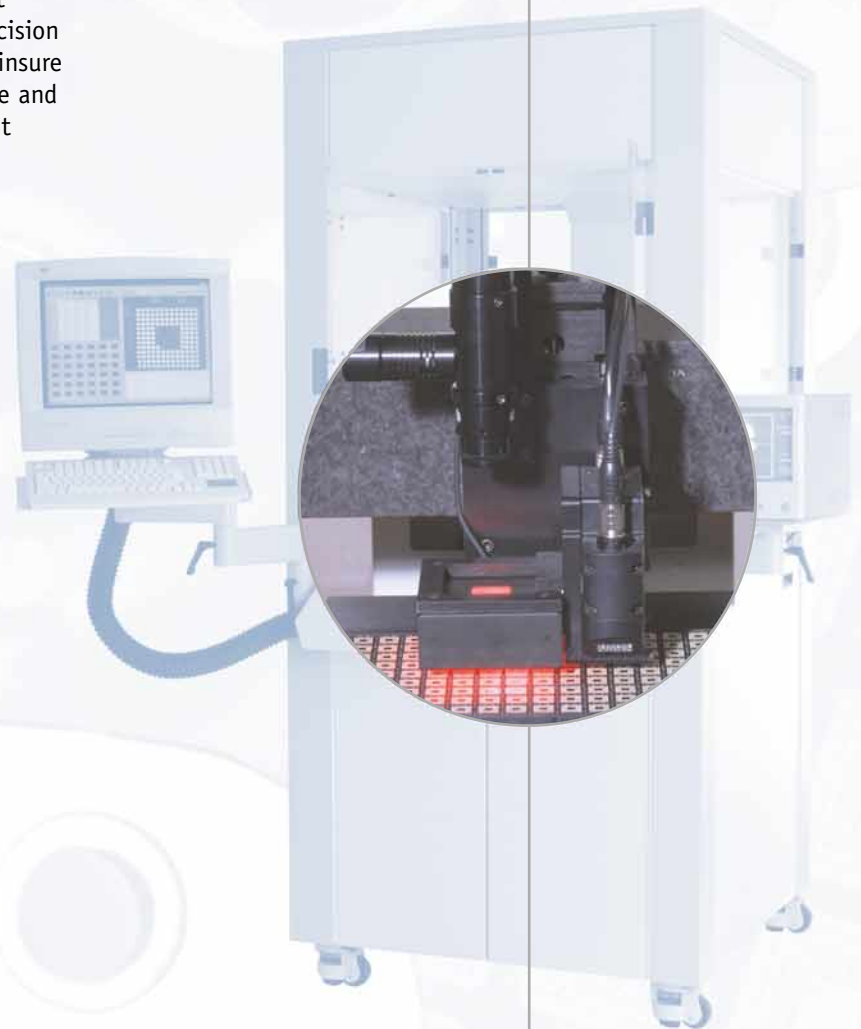
Customer Applications:

Product Verification: Importing CAD data allows the software to compare measured results with design specifications.

Machined Surfaces: Measurement of location and size of geometric shapes. These shapes can be selected from a library or taught into the system.

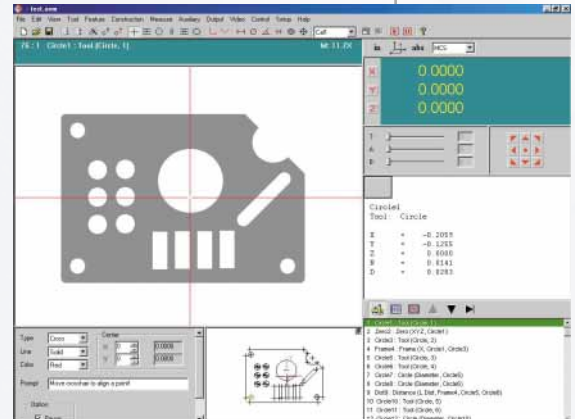
Electronic Components: Identification of component placement on a circuit board. Missing or incorrectly placed components can also be identified.

Switching Sensors: Combining the Polaris vision tool on a high accuracy laser inspection platform provides an economical multi-sensor solution without sacrificing accuracy.



Main Polaris Software Features

- Multiple screen layouts
- Optional laser capability for high precision Z measurement
- Advanced edge detection for accurate measurement
- CAD import and export
- Easy dimensional measurement with CAD-like graphics
- Supports inch or millimeter units, Cartesian and Polar coordinates
- Datum reference frame for alignment and tolerance
- User-defined measurement calculations
- User-defined functions
- Up to 32000 points per feature
- Save, open, run and edit part program capability
- Group editing
- Real-time link to other applications, such as spreadsheets, SPC and best-fit
- Flexible data format for post processing
- Color or B/W images acquisition, archiving and retrieval
- Live image or bitmap image processing
- TWAIN support
- Image annotation and comparison
- International language support
- Online help

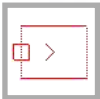


Complete vision solution

Image Tools



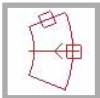
Crosshair Tool: Manually define a single point.



Edge Tool: Automatically find all points on an edge.



Circle Tool: Automatically find all points on a circle.



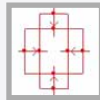
Arc Tool: Automatically find all points on a radius.



Linewidth Tool: Automatically find all points on two parallel edges.



Area Tool: Automatically find the area and centroid of an area.



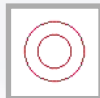
Slot Tool: Automatically find all points on four sides.



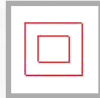
Ellipse Tool: Automatically find all points on an ellipse.



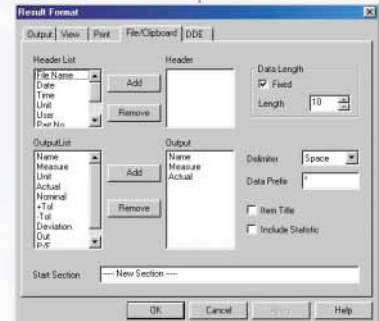
Cross Target: Automatically find a cross pattern.



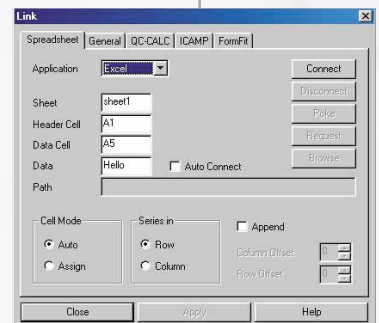
Circle Target: Automatically find a circle pattern.



Rectangle Target: Automatically find a rectangle pattern.



Flexible and independent results formats for various outputs



Seamless and real-time link to third party software

All specifications subject to change without notice.

Solaris Development Inc.

550 Weddell Drive, Suite 3
Sunnyvale, CA 94089, USA
Phone: (408) 541-0151
Fax: (408) 541-0153
Email: inquiry@solaris-inc.com